



Discovery^{Desktop}

Call Reception from the Desktop

- Attendant Disable Outgoing Access
- Attendant Override
- Automatic download of DSS/Flex button information
- Call Forwarding
- Call Park
- Call Transfer
- Caller ID Window
- Camp On
- Color-coded DSS/BLF
- CO Line Queuing
- Conference
- Custom Messages
- DSS Buttons
- DSS Programming
- Fixed Buttons
- Flash
- Flexible Buttons
- Greeting Banners
- Hold
- ICLID Call Management Table
- ICLID Setup
- Macro Function
- Message Waiting
- Name in Display
- Phone Directories
- Quick Keys
- Redial Function
- Sorting Station Speed Numbers
- System Time and Date
- View 40 or 69 stations at-a-glance
- Voice Mail Screen

In today's fast paced work environment, the ability to process calls quickly and efficiently is critical to any company's success. With Discovery^{Desktop}, optimal efficiency and increased productivity is merely a click away.

Discovery^{Desktop} is a computer-telephone integration system that links a Vodavi attendant station* with a personal computer by transferring many of the telephone functions to the PC. This provides users with an efficient answering environment to process calls using the PC screen as a visual guide. To navigate the Discovery^{Desktop} attendant console, users may use their mouse or keyboard by clicking on the desired button or entering a phone number in the dial window. In addition, the extensions represented in the display window are conveniently color-coded to easily identify the status of each line.

Discovery^{Desktop} was designed to run in a Windows® environment, so users can handle calls while working in other Windows programs. A scrollable, sortable display window allows the attendant to monitor up to 492 stations simultaneously.

Attendants Can Manage Calls with Ease

Discovery^{Desktop} is a user-friendly system designed for swift, accurate call handling. Ideal for attendants, incoming and outgoing calls are handled with ease.

It only takes one or two clicks of the mouse to activate Call Transfer, Hold, Call Park, Camp On, Message Waiting and Call Forwarding.

Color-Coded Extension Status

Discovery^{Desktop} provides extension status at-a-glance. Extensions-in-use display in red, stations in Do-Not-Disturb display in yellow and idle stations display in gray.

Quick Keys

Discovery^{Desktop} is easy to navigate with quick keys on the key board without using the mouse. (F1-F12 simulate the first 12 flexible buttons)



DISCOVERY
Desktop

**Telephone must be CTI adaptable.
Ask your dealer for details.*

Only one Discovery^{Desktop} per system.

Windows® is a registered trademark of Microsoft.



Discovery^{Desktop}

Call Reception from the Desktop

Custom Greeting Display for Multiple Tenant Situations

Discovery^{Desktop} is capable of displaying custom greetings based on Caller ID information of up to four tenant phone numbers. If Caller ID does not match a programmed tenant number, no greeting will be displayed. This feature helps the attendant know how to answer the phone.

Extensions Display

View 40 or 69 extensions at a time in the extensions window, depending on preference.

Connected Call and Notes Display

View Caller ID information for all connected calls at a glance and attach notes to them for quick reference. This feature helps the attendant manage multiple parked calls.

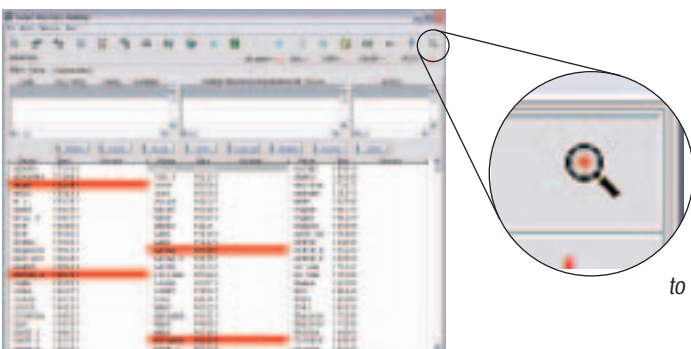
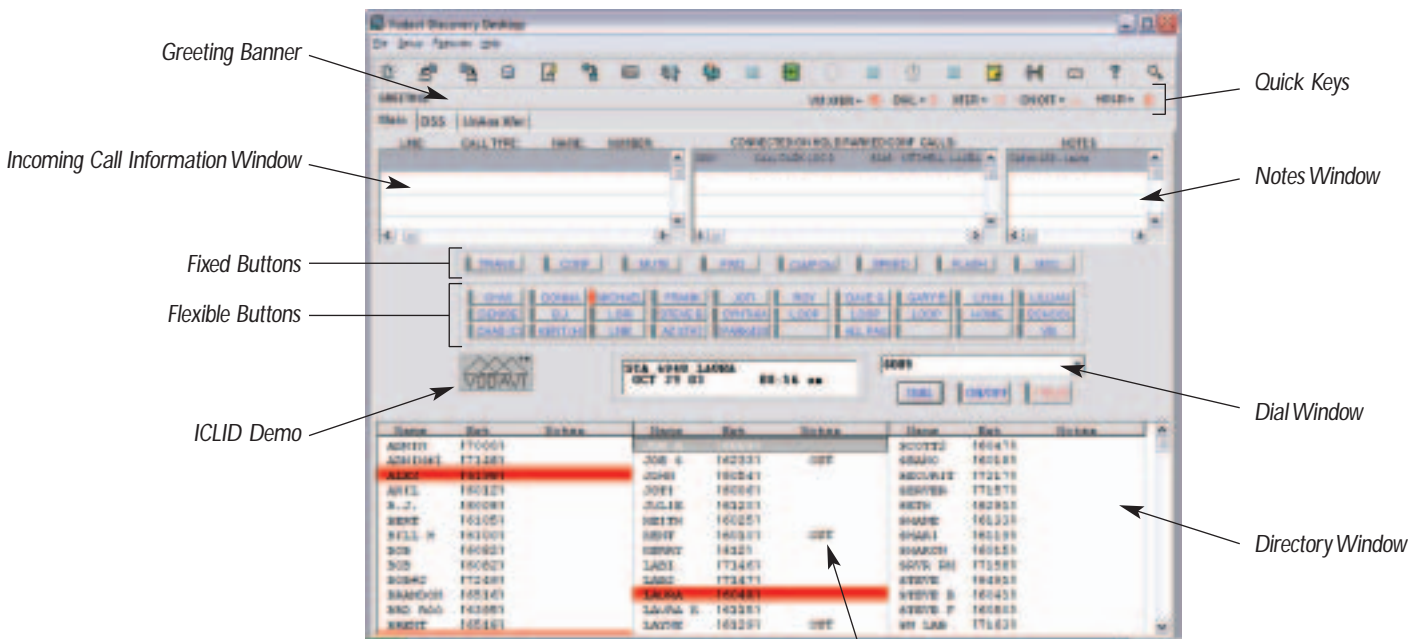
Automatically Update Extension, Flex and Status Information

Users can download DSS Labels, Flex Codes and LED status directly from the KSU with a single mouse click.

In addition, the DSS information will automatically populate in the directory window, so the attendant doesn't have to create an extension list from scratch.

Fixed and Flexible Buttons

Discovery^{Desktop} has 8 fixed buttons and up to 30 flexible buttons, depending on the digital telephone. The flexible buttons can be programmed to provide one-touch access to frequently dialed extensions, speed dial numbers, or system features such as call park, all-call-page, and much more.



User activated out-of-office status

By clicking the magnifying glass, the call directory window increases to show 69 names at a glance.

DISCOVERY^{Desktop}

*Telephone must be CTI adaptable. Ask your dealer for details.

Features and specifications are subject to change without notice. ©2004 Vodavi Technology, Inc. Discovery^{Desktop} and Vodavi are trademarks of Vodavi Technology, Inc.